

diagram MSP[®]

markers.



stenciling.



inks.



coding.



Contents

1 - 6 Markers

- 5 - 6 · Paint Markers
- 6 · Ink Markers

7 - 14 Stenciling

- 11 · Electronic Stencil Machines
 - Cutting Media
- 12 · Manual Stencil Machines
 - Cutting Media

15 -20 Inks

- 19 - 20 · Stenciling Inks
- 20 · Roller Coder Inks

21 - 28 Coding

- 24 - 26 · Contact Coders
- 27 · Coder Cartridges
- 27 - 26 · Coder Type Sets





markers.



A Diagraph Marker For Every Task

No matter what line of work you're in, there's a Diagraph marker that's up to the task. While all of our ink and paint markers can be effectively used in most industry applications, our markers differ in their ink fill amounts and in the length of time the mark stays on a product. Take a closer look at the specific characteristics of each of our proven marker categories to determine which one is best for the unique needs of your business.

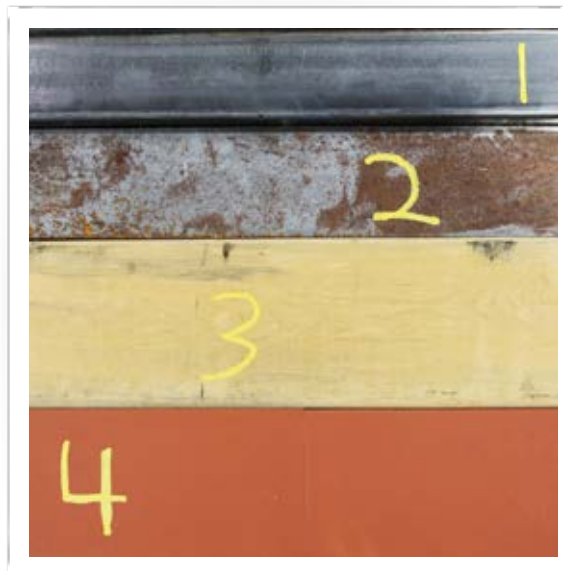


paint markers

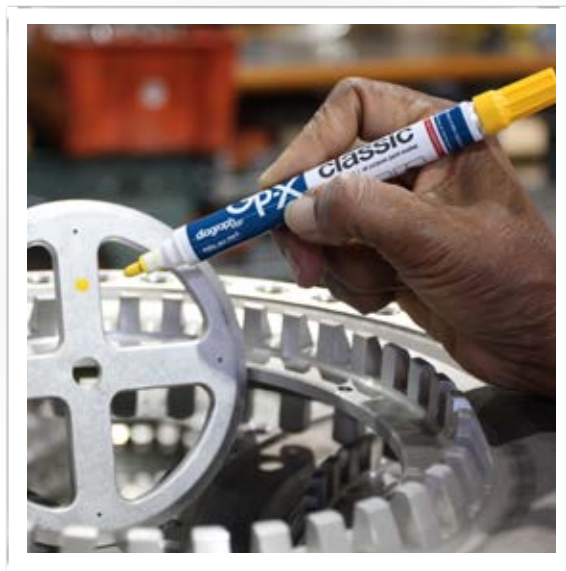
GP-X: Classic, Grizzly, Spike & 2018P

Our GP-X Classic, Grizzly and 2018P effectively mark on almost any surface. These markers are Xylene-based; a drying agent that penetrates oily surfaces when other drying agents won't.

Effectively marking on any surface up to 150° F, the GP-X Spike is best for metal, wood, and rubber applications.



1. Oily Metal 2. Rusty Metal 3. Wood 4. Rubber



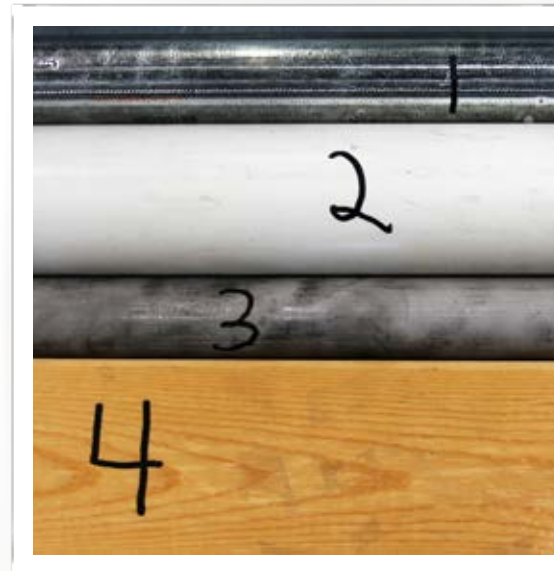
eco markers

GP-X Eco & GP-X Anchor

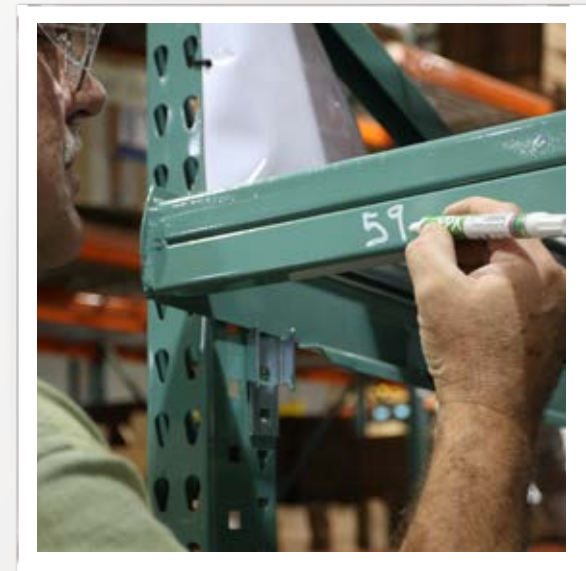


For Performance. For the Environment.

A newer, environmentally friendly marker line designed for companies requiring non-Xylene based markers. The GP-X Anchor is water-based, and the GP-X Eco features a fast dry time, but both are non-hazardous for the user and the environment.



1. Stainless 2. PVC 3. Galvanized 4. Wood



ink markers

Ideal Mark & Jumbo Insta-Marker

A hard-working line of xylene-based permanent ink markers that effectively penetrate oily surfaces and work well in industrial applications.



1. Metal 2. Wood 3. Cardboard





GP-X classic

VALVE ACTION | all purpose paint marker

Stands The Test Of Time

A permanent fixture as the industry's favorite marker, the GP-X Classic makes weather and fade-resistant marks on: porous and non-porous surfaces, metal, wood, corrugated, rubber, plastic, glass and more. Available in 13 colors.

stock #	color	quantity
0918500	black	12
0968500	white	12
0958500	yellow	12
0968520	red	12
0968521	blue	12
0968522	green	12
0968523	orange	12
0968524	silver	12
0968526	fluorescent pink	12
0968527	purple	12
0968528	light green	12
0968529	gold	12
0968530	brown	12
0958401	replacement tip (12)	
0940018	tip, taper down (12)	



GP-X grizzly

VALVE ACTION | all purpose paint marker

Leave A Ferocious Mark

When only the widest, huskiest mark will do, let a Grizzly take control. Think of it as a GP-X Classic, but wider – and wilder! Leave your mark with this ferocious marker that's available in 6 vivid colors.

stock #	color	quantity
0971500	white	3
0971501	yellow	3
0971502	black	3
0971503	red	3
0971504	blue	3
0971505	green	3
0971510	replacement tip (6)	



GP-X mspike

solid paint marker

Sharp Looks. Piercing Value.

This inexpensive, high-performance marker is ideal for most applications and is designed for marking on surfaces up to 150 degrees. Marks on metal, wood, rubber and more. Available in 5 colors.

stock #	color	quantity
0961001	white	12
0961002	yellow	12
0961003	black	12
0961004	red	12
0961005	blue	12
GPX Spike High Temp (150F - 1200F)		
0961000	white	12



2018-P

Big Barrel, Heavy Hitter

Do more, go further with these long-lasting markers that feature an exclusive large diameter barrel to hold more ink, and it's easy to hold on to! This durable pigmented paint marker is available in 9 colors.

stock #	color	quantity
0940001	black	12
0940002	blue	12
0940006	light green	12
0940007	green	12
0940008	orange	12
0940009	pink	12
0940010	red	12
0940013	white	12
0940014	yellow	12
0958401	replacement tip (12)	
0940018	tip, taper down (12)	



ideal MARK

VALVE ACTION INDELIBLE MARKING PEN

Full Metal Jacket

As the only all-metal marker in the industry, this high-performance classic offers excellent value with indelible, fade-resistant ink, color-coded cap, pocket clip and a leak-proof aluminum valve. Available in four colors and two replaceable tips.

stock #	color	quantity
0930001	black	12
0930002	blue	12
0930004	green	12
0930006	red	12
0930011	Std Felt Bullet tip (12)	
0930010	Felt Chisel tip (12)	



JUMBO

insta-marker

Large & In Charge

Do everything in a BIG way with this marker that features a chisel point for variable-size marking. Makes an instant, permanent, and water-proof mark on porous and most non-porous surfaces.

stock #	color	quantity
0912110	black	12

Eco Friendly Paint Markers

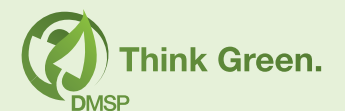


GP-X eco classic

*xylene free VALVE ACTION | all purpose paint marker

Clear The Air

Make a mark on your business, not the environment, with these eco-friendly, Xylene-free markers. Works great on metal, wood, rubber and glass. Additional colors available.



stock #	color	quantity
0921001	white	12
0921002	yellow	12
0921003	black	12
0921004	green	12
0921005	blue	12
0921006	red	12
0921007	orange	12
0921100	replacement tip (12)	



GP-X anchor

VALVE ACTION | water-based paint marker

The Next Wave Of Innovation

Our new water-based, high-performance marker helps you do more with less. Requires approximately 2 minutes of dry time and features minimal solvent, making it safer for the user and the environment. Unregulated for all modes of shipping – even overseas!

stock #	color	quantity
0975000	white	12
0975001	yellow	12
0975002	black	12
0975003	red	12
0975005	green	12
0975004	blue	12
0975401	replacement tip (12)	

stenciling.



Quality makes the cut.

Whether you're marking products for shipment, identifying plant areas, or creating directional and safety signs, Diagraph stenciling products are the quick and cost-effective way to make a positive impression in the workplace. Our legendary stencil machines have set the standard since 1893 and we continue to use leading-edge technology and systems. You'll find our stencil products in oil fields, shipyards, steel mills, aerospace environments, warehouses, shipping departments, military and municipal buildings, and anywhere else that demands excellent marking results on difficult surfaces.



stencil machines

Manual Stencil Machine, SC-5 Electronic Stencil Machine

As the industry standard ever since we invented the technology, our manual stencil machines offer versatile, proven results in a rugged, industrial-strength package.

Diagraph's proud history of stencil machines continues with the SC-5 – the most advanced system available. Effortlessly cut a wide range of characters sizes, plus leverage knife-saving technology, an extra-wide 29" bed, an easy to use keypad – all for less than the price of a large character manual stencil machine.



cutting media

Stencil Board, Ultra-Cut, Poly-NT, Poly-Extra...

Our leading-edge materials, stencil boards and ink applicators provide you with the necessary accessories you need to succeed. Take a closer look at these resources for your electronic and manual cutting machines.



applicators

OneShot, HV, Rol-It-On...

With a full lineup of proven yet economical performers, there's a Diagraph applicator solution for virtually every job and surface, including porous and non-porous surfaces, plastics, vinyl, glass, and even metal. Best of all, these applicators are as simple to use as they are effective and are available in a wide variety of styles and inks.



SC-5 Electronic Stencil Machine

“Cutting” Edge Technology

Diagraph’s proud history of stencil machines continues with the SC-5 – the most advanced system available. Effortlessly cut many character sizes, plus leverage knife-saving technology, an extra-wide 29” bed, an easy to use keypad and screen – all for less than the price of a large character manual stencil machine.



stock #	product	ship weight
KITS		
7901000	Kit, Electronic SC5 w/Oilboard	112
7902000	Kit, Electronic SC5 w/UltraCut	112
7903000	Kit, SC5 Classic w/Oilboard	112
7904000	Kit, SC5 Classic w/UltraCut	112
ACCESSORIES		
7900005	SC5 Classic Software	
7900007	SC5 Carbide Blade 45° for vinyl	
7900008	SC5 Carbide Blade 60° for other media	
7900010	SC5 Basic Software	
7900101	SC5 54” Cutting Strip	

SC-5 Kit 7901000

- SC-5 Cutter
- Cutter Stand
- Basic Software
- 2-60° Cutting Blades
- 3” Oneshot Assembly
- 1 Oneshot Cartridge
- 2 Rolls of Stencil Board
- 10 sheets of .015 24” x 36” Stencil Board

SC-5 Kit 7902000

- SC-5 Cutter
- Cutter Stand
- Basic Software
- 2-60° Cutting Blades
- 3” Oneshot Assembly
- 1 Oneshot Cartridge
- 2 Rolls of Ultra Cut
- 10 sheets of .015 24” x 36” Stencil Board



NEED A BIGGER CUT?
Ask about our 2” Stencil Machine.

Manual Stencil Machine

Over A Century Of Performance

As the industry standard ever since we invented the technology, our manual stencil machines offer versatile, proven results.

stock #	model	letter height	letters per FT.	height of max # of lines
STENCIL CUTTER KITS (STANDARD)				
0101000K	1/8” Stencil Machine	1/8” (3.18 mm)	81	41/8” (104.78 mm)
0102000K	1/4” Stencil Machine	1/4” (6.35 mm)	48	41/8” (104.78 mm)
0104000K	1/2” Stencil Machine	1/2” (12.7 mm)	22	41/2” (114.3 mm)
0105000K	1” Stencil Machine	1” (25.4 mm)	15	5” (127 mm)
0107000K	3/4” Stencil Machine	3/4” (19.05 mm)	15	41/2” (114.3 mm)
0120000K	Jumbo Stencil Machine	2” (50.8 mm)	9	115/8” (295.28 mm)

Stencil machine kits contain stencil machine, 3” Oneshot Assembly, a Black Oneshot Cartridge and 25 sheets of 6.5 x 20 .015 natural stencil board.

Sample Character Heights



Electronic Stencil Machine Cutting Media

Stencil Board

The SC-5 Electronic Stencil Machine has the ability to cut traditional 10-point brown rolled, 20”x100’ board.

Ultra-Cut

The original and still the best, Ultra-Cut is a 2-ply poly-ethylene material with an adhesive backing, making it an ideal substitute for stencil board on concave or convex surfaces. Easy material for cutting. Tough enough to last.

Poly-NT

Designed for multiple applications, Poly-NT is similar to Mylar® and can be stored and reused many times.

stock #	media	rolls per box
7910003	Stencil Roll 20” x 100’ Rolls .010	2
7920001	PolyNT 13.5” x 100’ Per Roll	1
7920002	Poly Extra 18” x 100’ Per Roll	1
7930001	UltraCut™ Poly 22.5” x 100’	2
7940001	Vinyl, Black Inter 15” x 50 Yds	1
7940007	Vinyl, White Inter 15” x 50 Yds	1
7940009	Transfer Tape 14” x 100 Yds	1

Poly-Extra

All the benefits of the Poly-NT but with extra width for larger stencils, plus a light, temporary, non-slip adhesive to make stenciling fast and easy.

Transfer Tape

For use with vinyl material, Transfer Tape helps transfer the cut sign or stencil from the backing material to the surface.

Vinyl

Available in black & white, our vinyl material is the number one choice for creating signage.

Manual Stencil Machine Cutting Media

stock #	sheet size (h x w)	sheets/pack*
PARCELPACK STENCIL BOARD (50 LBS.)** .015 NATURAL		
0730364	3” x 36” PP .015 (76.2 mm x 914.4 mm)	750
0740204	4” x 20” PP .015 (101.60 mm x 508 mm)	1050
0750204	5” x 20” PP .015 (127 mm x 508 mm)	800
0760204	6” x 20” PP .015 (152.4 mm x 508 mm)	650
0760364	6” x 36” PP .015 (152.4 mm x 914.4 mm)	350
0765204	6-1/2” x 20” PP .015 (165.1 mm x 508 mm)	650
0765244	6-1/2” x 24” PP .015 (165.1 mm x 609.6 mm)	500
0770204	7” x 20” PP .015 (177.8 mm x 508 mm)	550
0770244	7” x 24” PP .015 (177.8 mm x 609.6 mm)	500
0780364	8” x 36” PP .015 (203.2 mm x 914.4 mm)	300
0711364	11” x 36” PP .015 (279.4 mm x 914.4 mm)	200
0724364	24” x 36” PP .015 (609.6 mm x 914.4 mm)	100
0724404	24” x 40” PP .015 (508 mm x 1,016 mm)	100
0714015	Non Standard Sizes	

*approximate **non-standard sizes available extended lead-time, call for price and availability

Stencil Board

Providing superior ink resistance, our Stencil Board is produced from a minimum of 65% recycled fiber and can be used repeatedly. See Stencil Board selector guide for appropriate size.

*DISPENSA-PAC 23lb box available. Call for sizes.

.007 White Stencil Board

White stencil board is premium quality board for use with 1/8” and 1/4” stencil cutting machines.

*Call for sizes.

Stencil Board Selector Guide

letter height	number of lines to be cut: required board height					
	1	2	3	4	5	6
1/4” (6.35 mm)	4”	4”	4”	4”	4”	5”
1/2” (12.7 mm)	4”	4”	4”	5”	6”	6.5”
3/4” (19.05 mm)	4”	4”	5”	6.5”		
1” (25.4 mm)	4”	5”	6”	6.5”		
2” (50.8 mm)	4”	7”	11”	11”		



Oneshot®

Your Best Shot

Flexible, portable, and convenient, Diagraph Oneshot stencil system works great on both rough and smooth surfaces. Available in seven high-visibility colors. These inks are CONEG certified and SARA compliant and are convenient for remote job sites. Plus, the replaceable neoprene roller and plastic cover are available in two convenient sizes.

Oneshot® Starter Kit

The Oneshot Kit includes everything you need to get started.

- Assembly
- Ink Cartridges
- Roller Cover

stock #	description
ONESHOT KIT	
2700865	Oneshot Roller Kit w/8 Black Ink Cartridges
2700881	Oneshot 3" Kit w/1 Black Ink Cartridge

Oneshot® Ink Cartridges

Choose from seven high-visibility colors—for porous and non-porous surfaces. All Oneshot stencil inks are CONEG certified and SARA compliant. Minimum order is eight cartridges—about one liter of ink.

stock #	color	quantity
ONESHOT INK CARTRIDGES		
2700864	GS1 Black	8/Ctn
2700870	MP Red	8/Ctn
2700872	GS3 White	8/Ctn
2700887	MP Green	8/Ctn
2700873	MP Yellow	8/Ctn
2700874	MP Orange	8/Ctn
2700850	MP Blue	8/Ctn

Ink Conditioner

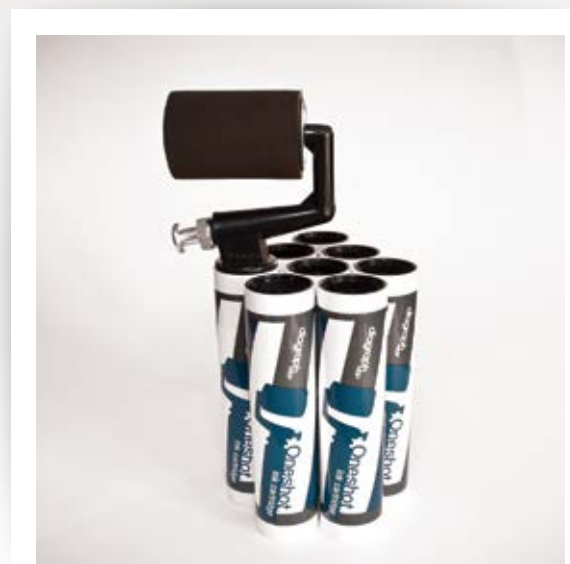
For Stencil Rollers and Pads
Extends stencil roller and ink pad life by preventing them from drying out. Adds ink mileage by maintaining the proper ink consistency. Use with all stencil rollers and pads.

stock #	color	quantity
CONDITIONER FOR STENCIL INKS		
0502008	conditioner	1 Quart (.9475 L)
0504008	conditioner	1 Gallon (3.79 L)

Oneshot® Roller Assemblies

The Oneshot roller twists onto a specially designed ink cartridge—creating an easy-to-use stenciling tool. The ink saturation is controlled by a valve in the assembly. The roller assembly features a durable neoprene roller. There's no messy refill, simply attach a new cartridge when you run out of ink.

stock #	description
ONESHOT REPLACEMENT PARTS	
2700810	Oneshot Roller Assembly—1 1/2" (38.1 mm)
2700809	Oneshot Roller Assembly—3" (76.2 mm)
2700807	3" Replacement Roll "N" Oneshot/HV
2700808	Replacement Roller—1 1/2" (38.1 mm)
0603802	Replacement Lid and Cover (for rollers)



Rol-It-On® System

For All Surfaces

Make a smart investment with this economical system that marks on both porous and non-porous surfaces. Use the Rol-It-On ink pad to ink the roller prior to stenciling.



HV System

For Porous & Non-Porous

Make a perfect stencil impression even on difficult-to-mark surfaces such as plastic, vinyl, glass and metal. Refillable, four-ounce (118.3 ml) handle is designed for heavier pigmented inks, including GS & Multi-Purpose type inks.



Model M Stencil Brush

For Rough Surfaces

Designed for rough surfaces, this refillable 7-1/2" (190.5 mm) stenciling brush features bristles set in epoxy for long-lasting performance with solvent-based inks. Easy to use side button releases ink. Use with Insta-Dry, GS-1 black ink, SK-1 inks, R inks and GS white inks.



Applicator Supplies

stock #	description	roll type	size	quantity
STENCIL APPLICATOR SYSTEMS				
0405103	Rol-It-On Assembly	Type N	1-1/2" (38.1 mm)	1
0405101	Rol-It-On Assembly	Type N	3" (76.2 mm)	1
0603801	HV Assembly	Type N	3" (76.2 mm)	1
REPLACEMENT ROLLS				
0405104	Rol-It-On Roll	Type N	1-1/2" (38.1 mm)	2
0405102	Rol-It-On Roll	Type N	3" (76.2 mm)	2
2700807	3" Replacement Roll Oneshot & HV		(76.2 mm)	2
ROL-IT-ON INK PADS				
0408201	3" Regular Ink Pad/Metal Case		4" x 7"	1
MODEL M STENCIL BRUSH				
0908000	Stencil Brush			
0908801	Replacement Brush Tip			

All products priced per each. Minimum order applies.



inks.



Do It With Diagraph Inks

When you're ready to make a bold statement, do it with Diagraph inks. From world-class stenciling inks to roll-coder and ink-jet system inks that set the standard for the industry, we have the ink colors and types to match your specific applications, systems, cartridges and specifications. Plus, our inks are designed to meet the most demanding industry standards. Depend on this complete selection of high-quality inks to help give you every possible advantage when you want to make a big impression in a noticeable way.



Stenciling Ink Guide

stencil ink	pigmented	dye	for use with	porous	non-porous	special properties
Multi-Purpose Ink	•		HV and Ro-It-On® with Type N roller	•	•	Meets most VOC requirements fast dry for porous/non-porous
GS Series Ink	•		HV and Ro-It-On® with Type N roller	•	•	Dries instantly on most surfaces. UV resistant.
R Series Ink		•	HV and Ro-It-On® with Type N roller	•		Dries instantly on most surfaces to a permanent matte finish; oil, water, and fade resistant when dry.
SK-1 Ink	•		Model M Brush	•		Lightfast. Resistant to oil, water and some solvents after drying. Requires some agitation.
Insta-Dry Ink		•	Model M Brush	•	•	Dries instantly on most surfaces to a permanent matte finish; oil, water, and fade resistant when dry.
Conditioner	N/A	N/A	All stencil rollers and ink pads	N/A	N/A	Prevents roller and pad dry-out. Helps maintain proper ink consistency.

substrate surface condition

	substrate								surface condition					Dry Time (Sec)	Temp. Rating	
	Metal	Wood	Plastic	Glass	Concrete	Paper	Cardboard	Rubber	Cold Surface	Oily Surface	Rusty Surface	High Visibility	Wet			Dry
MP Inks	•	•	•	•	•	•	•	•	•		•	•		•	120	600F
GS-3 White	•	•			•	•	•		•		•	•		•	120	700F
GS-1 Black	•	•			•	•	•		•		•	•		•	120	500F
R-1 Black		•				•	•		•					•	5	600F
Insta-Dry Black		•				•	•		•					•	5	300F
SK-1 Black		•				•	•		•					•	60	600F
R-22 Red		•				•	•		•					•	5	600F
Insta-Dry Red		•				•	•		•	•				•	30	300F

Multi-Purpose

These all-around performers offer good adhesion and excellent results on both light and dark surfaces. For use with Rol-It-On® and HV applicators, these inks dry fast on porous and non-porous surfaces. With no hazardous air pollutants, they are CONEG/RoHS compliant, SARA compliant, contain low VOCs and feature No Prop 65 reportable chemicals.

GS Series Ink

Make a strong impression with this ink specifically designed for use with HV and Rol-It-On® with Type N roller.

stock #	color	quantity
GS SERIES INK QUART		
0510001	Black	6/Ctn
0552008	White	6/Ctn
GS SERIES INK GALLON		
0510002	Black	4/Ctn
0554009	White	4/Ctn

R Series Ink

The perfect match for HV and Rol-It-On® with Type N rollers. This CONEG/RoHS Compliant series of ink dries instantly on most porous surfaces to a permanent matte finish and is oil, water and fade-resistant when dry.

stock #	color	quantity
R SERIES INK QUART		
0512001	R1 Black	6/Ctn
R SERIES INK GALLON		
0514001	R1 Black	4/Ctn
0524003	R22 Red	4/Ctn

Other Sizes Available

SK-1 Ink

Empower your Model M brush with this high-performance ink that is fade resistant, and resistant to oil, water and some solvents after a fast drying process on most surfaces. Is SARA Compliant with no hazardous air pollutants, plus is CONEG/RoHS Compliant, features No Prop 65 reportable chemicals and is non-regulated by all modes of transportation.

stock #	color	quantity
SK INK GALLON		
0810013	Black	4/CTN

Rol-It-On® Conditioner

Keep high-quality stencil impressions on a roll with this conditioner that prevents roller and pad dry-out. Helps to maintain proper ink consistency and is for use with all stencil rollers and ink pads.

stock #	description	quantity
ROL-IT-ON CONDITIONER QUART		
0502008	Quart	6/Ctn
ROL-IT-ON CONDITIONER GALLON		
0504008	Gallon	4/Ctn

Other Sizes Available

Quik-Spray® Aerosols

Each of these permanent inks is great for stenciling or color coding, dries in just 30 to 60 seconds, complies with CONEG legislation and is environmentally safe. Non-fluorocarbon propellant and features new VOC-compliant formula. Contains no CFCs. Diagraph Blockout is fast drying, oil and water resistant.

stock #	color	quantity
QUIK-SPRAY AEROSOLS		
1563155	White	12/Ctn
1513155	Black	12/Ctn
1533155	Blue	12/Ctn
1553155	Yellow	12/Ctn
1523155	Red	12/Ctn
1543155	Green	12/Ctn
QUIK-SPRAY BLOCKOUT AEROSOLS		
1593157	Blockout Tan	12/Ctn
1563157	Blockout White	12/Ctn
QUIK-SPRAY AEROSOL ADHESIVE		
1203503		12/Ctn

Insta-Dry Ink

This quick-dry ink is for use with Model M brushes and dries in an amazing 10 seconds or less. Results in a permanent matte finish and is oil, water, and fade-resistant when dry. CONEG/RoHS Compliant.

stock #	color	quantity
INSTA-DRY STENCIL INK QUART		
0812110	Black	6/CTN
INSTA-DRY STENCIL INK GALLON		
0814110	Black	4/CTN
0824110	Red	4/CTN

Roll Coder Inks



Roll Coder Inks For Non-Porous Surfaces

stock #	color	quantity
1201FD CODER INK QUART		
0812058	Black	6/CTN
1201FD CODER INK GALLON		
0814058	Black	4/CTN
1303 BLUE INK QUART		
0832057	Blue	6/CTN
1205FD CODER INK GALLON		
0884055	Purple	4/CTN
CONDITIONER		
0802605	Conditioner	6/CTN

Other Sizes Available

Roll Coder Inks For Porous Surfaces

stock #	color	quantity
DL/XLM ROLL CODER INK GALLON		
0814073	Black	4/Ctn
0824051	Red	4/Ctn
0834051	Blue	4/Ctn
0844051	Green	4/Ctn

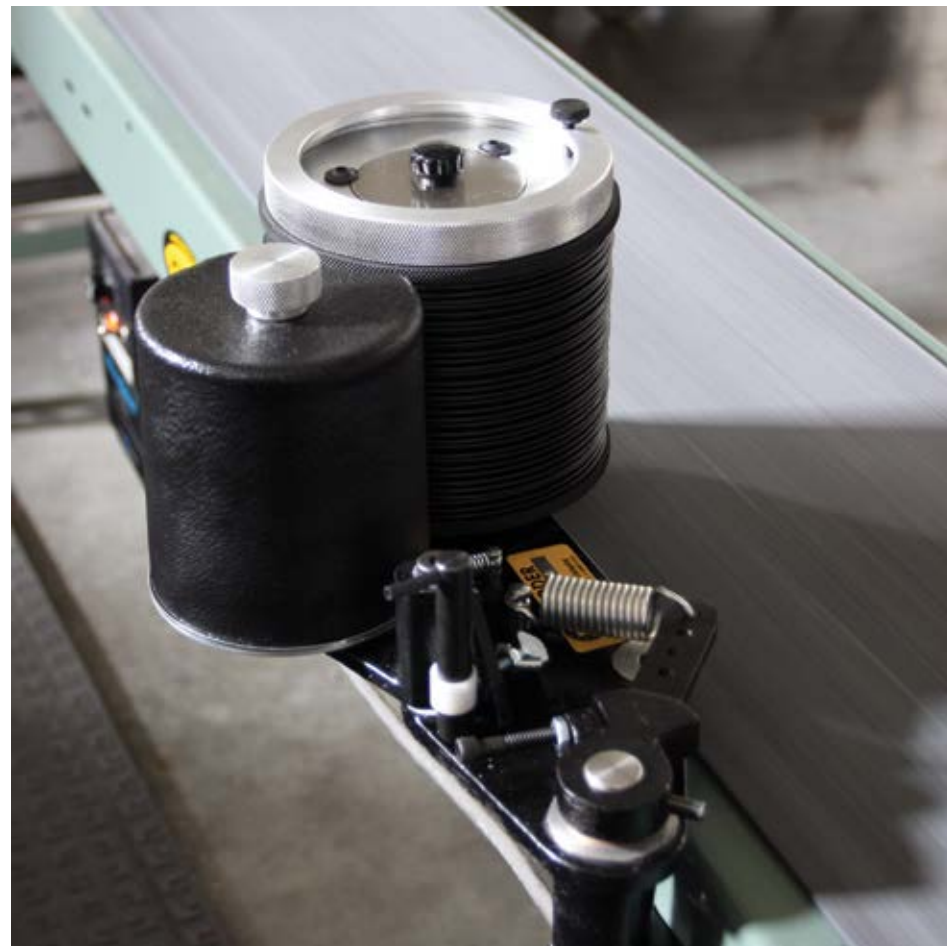
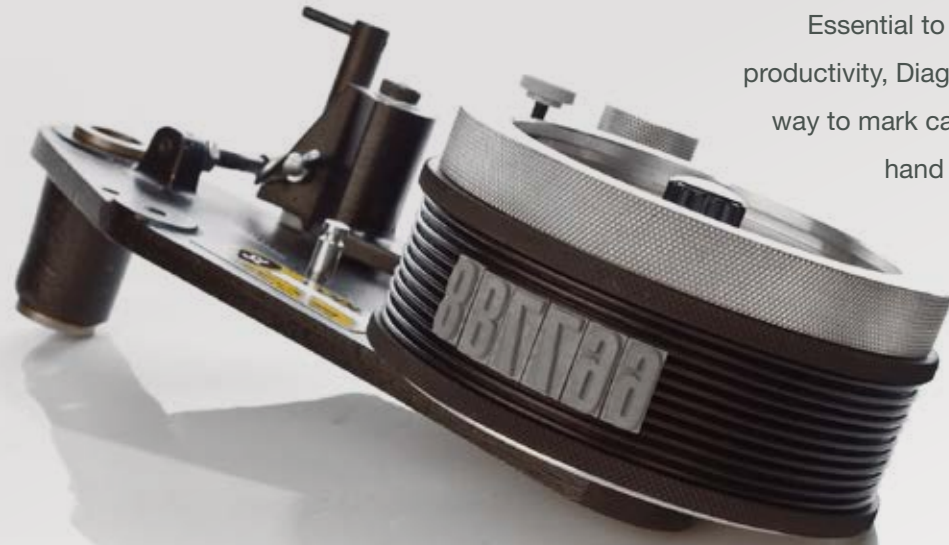


coding.



No Cracking These Coders

Essential to outstanding warehouse performance and productivity, Diagraph coders are the easy and economical way to mark cartons and containers. From automated to hand coders, you'll find everything you need to make lasting impressions. Plus, we offer a complete line of inks, cartridges, rubber type, and replacement parts for versatile applications to always keep you running strong. When you're ready to make positive marks in the workplace, look to the industry leader for coder products and accessories that are second to none.



SL/C Coder Kits

Depend on the quick-change artist that does it all. Mark the side, top or bottom of cartons – as low as 1 1/4" (31.75 mm) from the bottom edge – with this Slim Line Roller Coder. Quick-change capability eliminates the need for another coder – just purchase an extra die wheel for different type options. Three models offer a range of convenient print areas.

stock #	description	print area
*SL/C WITH QUICK CHANGE CAPABILITY		
1780115	#1 SL/C, LeftHand Kit	1" x 17"
1780116	#1 SL/C, RightHand Kit	1" x 17"
1780215	#2 SL/C, LeftHand Kit	2" x 17"
1780216	#2 SL/C, RightHand Kit	2" x 17"
1780315	#3 SL/C, LeftHand Kit	3" x 17"
1780316	#3 SL/C, RightHand Kit	3" x 17"

*The SL/C Coder Kits include DiLok type rings, friction bearers and XLM Cartridge



Right-Hand Model



Mini Coder

A big idea for small or lightweight coding applications, this coder is a budget-friendly option with a maximum print area of 1" x 6" (25.4 mm x 152.4 mm). Prints as low as 3/4" from the bottom of the carton and uses DiLok type.

stock #	description	print area
MINI CODER		
1741200	Mini Coder	1" x 6"
1741805	Side Mount Bracket	n/a

stock #	description	quantity
CARTRIDGES		
1741100	XLM Uninked	4
1741101	XLM Black	4
1741120	Mini Foam Uninked	1



Handi-Mark II Hand Coder

When automatic coding is not possible, roll up your sleeves and do it by hand. These printers quickly and easily apply data codes, lot numbers, and other key product information. Choose from indexing or non-indexing (continuous print) models.

stock #	description	print area
HANDI-MARK CODERS		
1785200	Handi-Mark II	3" x 8"
1785851	Extra Die Wheel Assy. For HMI	

stock #	description	quantity
CARTRIDGES		
1785852	DiDark HMI Uninked	1
1785854	DiDark HMI Black	1
1785213	Foam HMI Uninked	1





XLM[®] Cartridges

stock #	description	quantity
XLM CARTRIDGES		
1719100	#1 Uninked*	3
1719101	#1 Black	3
1719200	#2 Uninked*	2
1719201	#2 Black	2
1719300	#3 Uninked*	1
1719301	#3 Black	1

*Caution: Use only XLM ink, 1201FD, 1205FD, or 1303 with XLM Cartridges

The premium cartridge—extra long-lasting and re-inkable. Most effective on porous surfaces. Available uninked or pre-inked.



MicroX Cartridges

stock #	color	quantity
MICRO X CARTRIDGES		
1701401	#1 Black Micro X	3
1702401	#2 Black Micro X	2

Ideal for continuous web applications on porous surfaces. Not re-inkable.



Foam Cartridges

stock #	description	quantity
FOAM INK CARTRIDGES		
1717801	#1 Uninked	1 Cartridge
1717802	#2 Uninked	1 Cartridge
1717803	#3 Uninked	1 Cartridge

Recommended for use with non-porous inks including pigmented. Available uninked only. Contact your Diagraph representative for appropriate foam cartridge applications.

Roll Coder Type | Actual size Examples

DiLok 1/2" DC 12



DiLok 1" DC 10



Custom sorts and logo mats are available.

Coder Type Sets

DiLok Type



How it all comes together is what sets this type apart. This rubber type is molded to a tongue-and-groove base which interlocks with the die wheel. Provides excellent message flexibility plus different type sizes can be mixed on the same line.

stock #	description
DILOK LETTER SETS	
1710008	1/8" DiLok 5A Font
1710001	1/4" 5A Font (Neoprene) (3 Tie Knot) Style A13
1710005	3/8" 5A Font Style U75
1710007	7/64" DiLok 5A Font
1710002	1/2" 5A Font Style U76
1710003	3/4" 5A Font Style G78
1710004	1" 3A Font Style G79

stock #	description
DILOK FIGURE SETS	
1711001	Type, DiLok Figure Set 1/4"
1711002	Type, DiLok Figure Set 1/2"
1711003	Type, DiLok Figure Set 3/4"
1711004	Type, DiLok Figure Set 1"
1711005	Type, DiLok Figure Set 3/8"
1711006	Type, DiLok Figure Set 5/8"
1711007	Type, DiLok Figure Set 7/64"
1711008	Type, DiLok Figure Set 1/8"

Font & Figure Assortments

ABCDEFGHIJKLMNOPQRSTUVWXYZ
 5 4 5 4 6 4 4 4 5 2 2 5 3 5 5 4 2 5 5 5 3 2 3 2 3 2
 1 2 3 4 5 6 7 8 9 0 . , & \$
 3 2 2 2 2 2 2 2 2 3 4 2 1 1 2

5A

ABCDEFGHIJKLMNOPQRSTUVWXYZ
 3 2 3 2 4 2 2 2 3 2 1 2 2 3 3 3 1 2 3 3 2 2 2 1 2 1
 1 2 3 4 5 6 7 8 9 0 . , \$
 3 2 2 2 2 2 2 2 2 3 4 2 1 2

3A

1 2 3 4 5 6 7 8 9 0
 (4 Each)
 . - / (2 Each)
 \$, ¢ (1 Each)

FIGURE

diagraph MSP[®]

make your mark.

An **TW** Company