

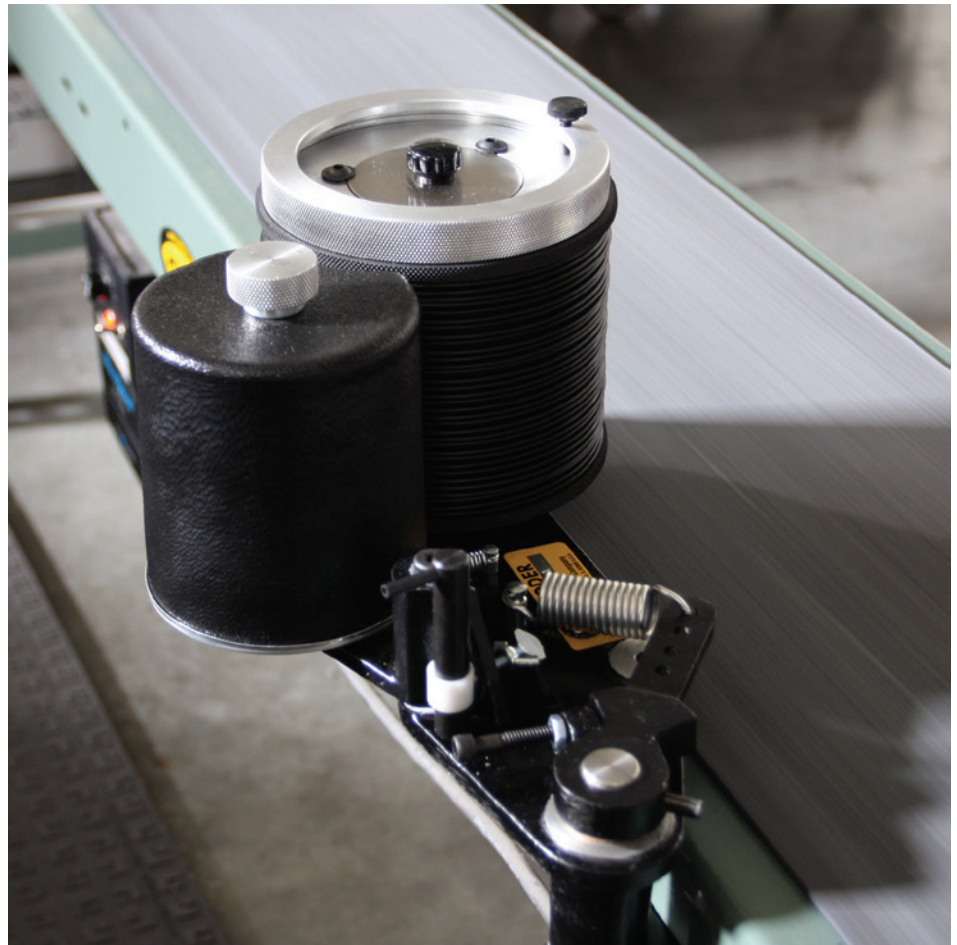
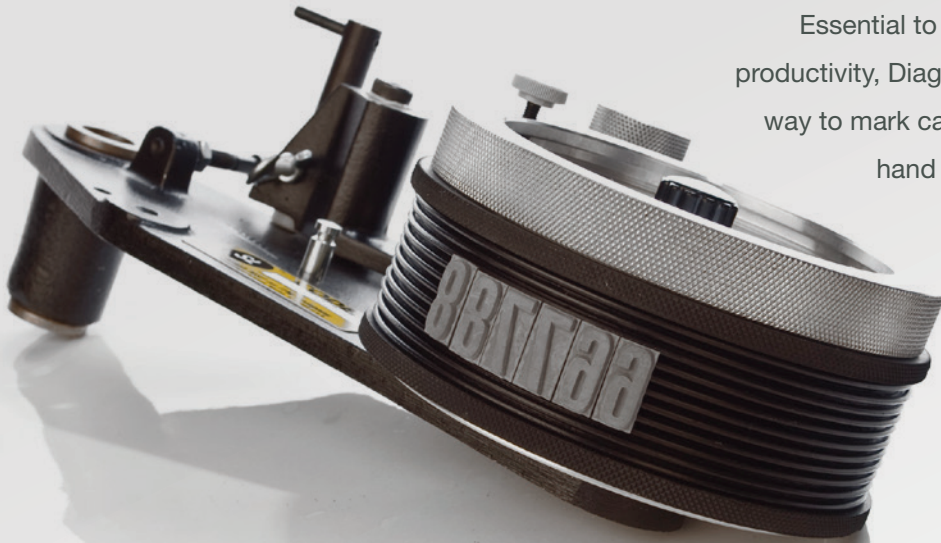


coding.



No Cracking These Coders

Essential to outstanding warehouse performance and productivity, Diagraph coders are the easy and economical way to mark cartons and containers. From automated to hand coders, you'll find everything you need to make lasting impressions. Plus, we offer a complete line of inks, cartridges, rubber type, and replacement parts for versatile applications to always keep you running strong. When you're ready to make positive marks in the workplace, look to the industry leader for coder products and accessories that are second to none.



SL/C Coder Kits

Depend on the quick-change artist that does it all. Mark the side, top or bottom of cartons – as low as 1 1/4" (31.75 mm) from the bottom edge – with this Slim Line Roller Coder. Quick-change capability eliminates the need for another coder – just purchase an extra die wheel for different type options. Three models offer a range of convenient print areas.

stock #	description	print area
*SL/C WITH QUICK CHANGE CAPABILITY		
1780115	#1 SL/C, LeftHand Kit	1" x 17"
1780116	#1 SL/C, RightHand Kit	1" x 17"
1780215	#2 SL/C, LeftHand Kit	2" x 17"
1780216	#2 SL/C, RightHand Kit	2" x 17"
1780315	#3 SL/C, LeftHand Kit	3" X 17"
1780316	#3 SL/C, RightHand Kit	3" X 17"

*The SL/C Coder Kits include DiLok type rings, friction bearers and XLM Cartridge



Right-Hand Model

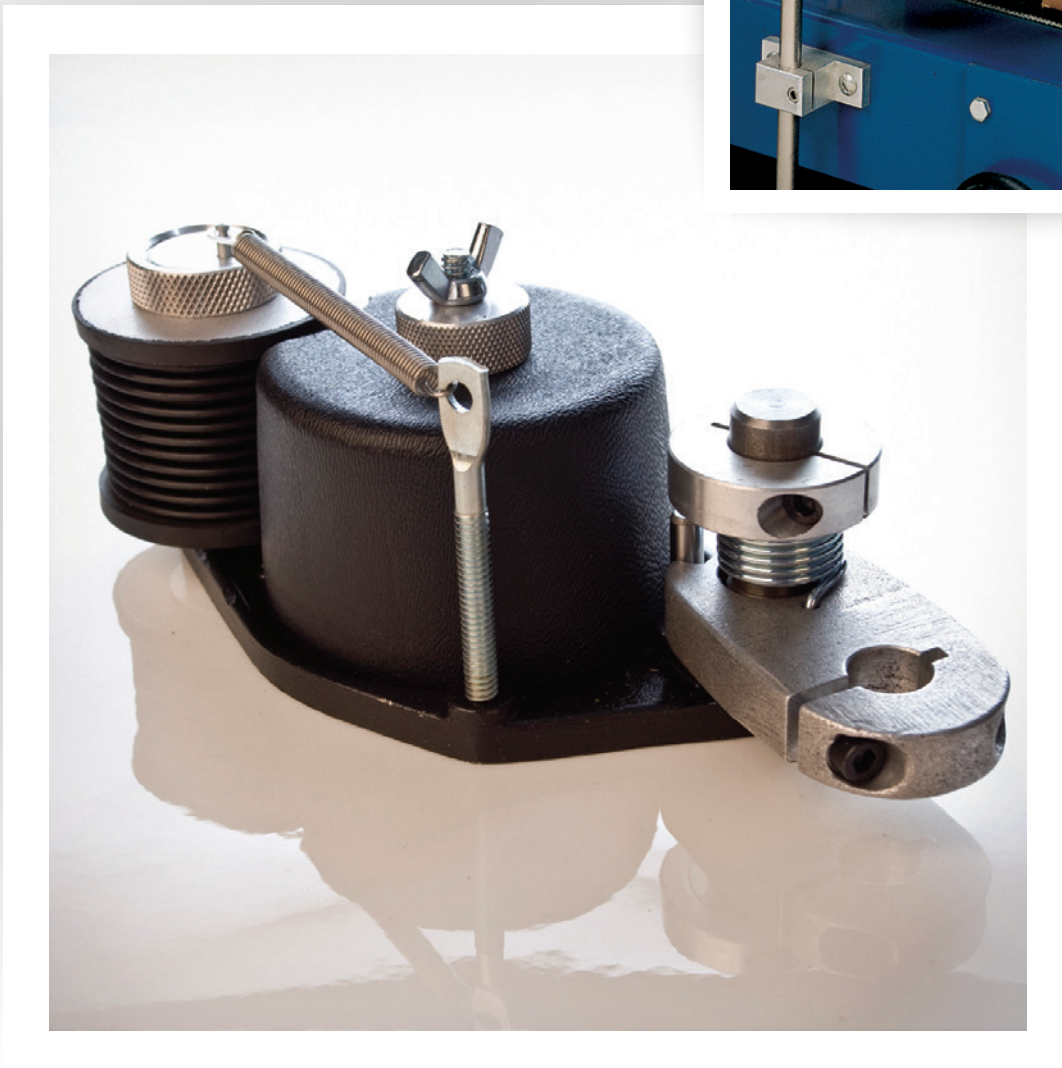


Mini Coder

A big idea for small or lightweight coding applications, this coder is a budget-friendly option with a maximum print area of 1" x 6" (25.4 mm x 152.4 mm). Prints as low as 3/4" from the bottom of the carton and uses DiLok type.

stock #	description	print area
MINI CODER		
1741200	Mini Coder	1" x 6"
1741805	Side Mount Bracket	n/a

stock #	description	quantity
CARTRIDGES		
1741100	XLM Uninked	4
1741101	XLM Black	4
1741120	Mini Foam Uninked	1



Handi-Mark II Hand Coder

When automatic coding is not possible, roll up your sleeves and do it by hand. These printers quickly and easily apply data codes, lot numbers, and other key product information. Choose from indexing or non-indexing (continuous print) models.



stock #	description	print area
HANDI-MARK CODERS		
1785200	Handi-Mark II	3" x 8"
1785851	Extra Die Wheel Assy. For HMII	

stock #	description	quantity
CARTRIDGES		
1785852	DiDark HMII Uninked	1
1785854	DiDark HMII Black	1
1785213	Foam HMII Uninked	1





XLM[®] Cartridges

stock #	description	quantity
XLM CARTRIDGES		
1719100	#1 Uninked*	3
1719101	#1 Black	3
1719200	#2 Uninked*	2
1719201	#2 Black	2
1719300	#3 Uninked*	1
1719301	#3 Black	1

The premium cartridge—extra long-lasting and re-inkable. Most effective on porous surfaces. Available uninked or pre-inked.

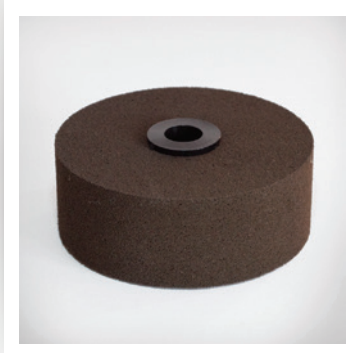
*Caution: Use only XLM ink, 1201FD, 1205FD, or 1303 with XLM Cartridges



MicroX Cartridges

stock #	color	quantity
MICRO X CARTRIDGES		
1701401	#1 Black Micro X	3
1702401	#2 Black Micro X	2

Ideal for continuous web applications on porous surfaces. Not re-inkable.



Foam Cartridges

stock #	description	quantity
FOAM INK CARTRIDGES		
1717801	#1 Uninked	1 Cartridge
1717802	#2 Uninked	1 Cartridge
1717803	#3 Uninked	1 Cartridge

Recommended for use with non-porous inks including pigmented. Available uninked only. Contact your Diagraph representative for appropriate foam cartridge applications.

Coder Type Sets

DiLok Type



How it all comes together is what sets this type apart. This rubber type is molded to a tongue-and-groove base which interlocks with the die wheel. Provides excellent message flexibility plus different type sizes can be mixed on the same line.

stock #	description
DILOK LETTER SETS	
1710008	1/8" DiLok 5A Font
1710001	1/4" 5A Font (Neoprene) (3 Tie Knot) Style A13
1710005	3/8" 5A Font Style U75
1710007	7/64" DiLok 5A Font
1710002	1/2" 5A Font Style U76
1710003	3/4" 5A Font Style G78
1710004	1" 3A Font Style G79

stock #	description
DILOK FIGURE SETS	
1711001	Type, DiLok Figure Set 1/4"
1711002	Type, DiLok Figure Set 1/2"
1711003	Type, DiLok Figure Set 3/4"
1711004	Type, DiLok Figure Set 1"
1711005	Type, DiLok Figure Set 3/8"
1711006	Type, DiLok Figure Set 5/8"
1711007	Type, DiLok Figure Set 7/64"
1711008	Type, DiLok Figure Set 1/8"

Roll Coder Type | Actual size Examples

DiLok 1/2" DC 12

1/2" **DIAGRAPH**
Approx. 3.5 chr. per 1"

DiLok 1" DC 10

1" **DIAGRAPH**
Approx. 2.5 chr. per 1"

Custom sorts and logo mats are available.

Font & Figure Assortments

ABCDEFGHIJKLMNOPQRSTUVWXYZ
 5 4 5 4 6 4 4 4 5 2 2 5 3 5 5 4 2 5 5 5 3 2 3 2 3 2
 1 2 3 4 5 6 7 8 9 0 . , & \$
 3 2 2 2 2 2 2 2 2 3 4 2 1 1 2

5A

ABCDEFGHIJKLMNOPQRSTUVWXYZ
 3 2 3 2 4 2 2 2 3 2 1 2 2 3 3 3 1 2 3 3 2 2 2 1 2 1
 1 2 3 4 5 6 7 8 9 0 . , \$
 3 2 2 2 2 2 2 2 2 3 4 2 1 2

3A

1 2 3 4 5 6 7 8 9 0
 (4 Each)
 . - / (2 Each)
 \$, ¢ (1 Each)

FIGURE

diagraph MSP[®]

make your mark.

An **TW** Company